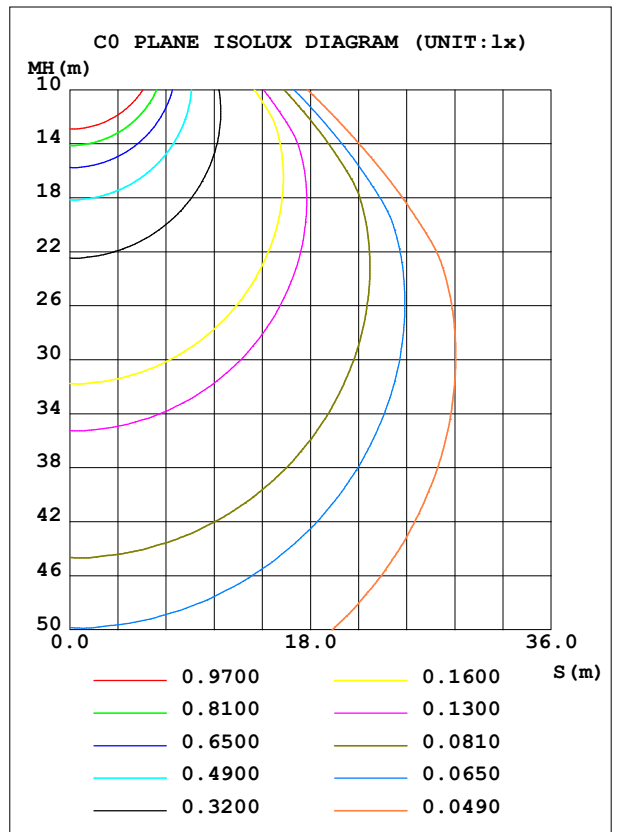
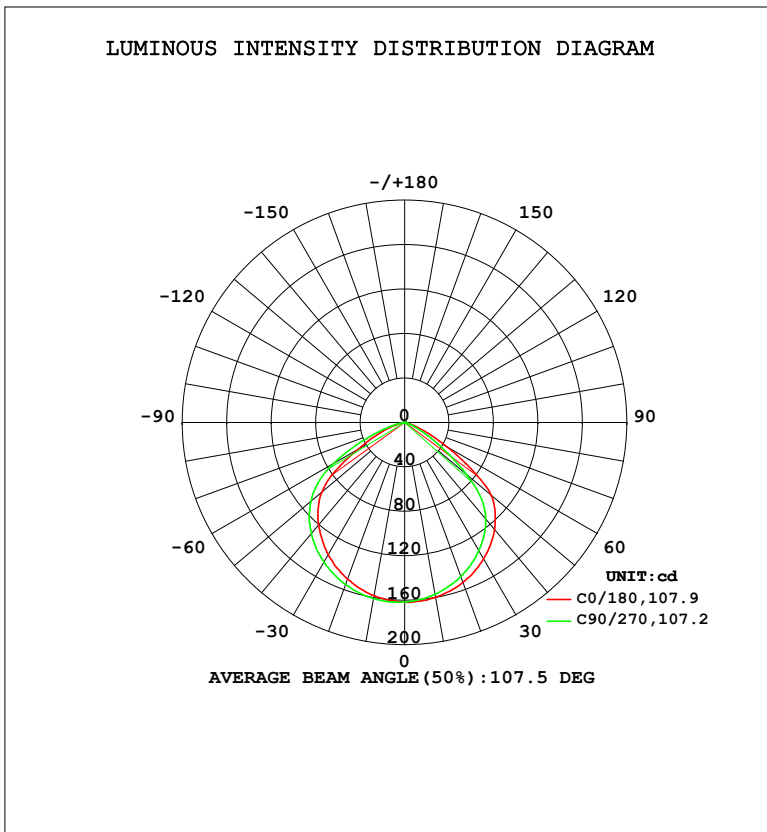


LUMINAIRE PHOTOMETRIC TEST REPORT

Test:U:120.1V I:0.0519A P:5.653W PF:0.9072 Freq:60.01Hz Lamp Flux:395.418x1 lm		
NAME: LRS-01-MCT-BR 5000K	TYPE:	WEIGHT:
SPEC.:	DIM.:	SERIAL No.:
MFR.: FOSHAN LEDKEY LIGHTING CO.,LTD.	SUR.:	Shielding Angle:

DATA OF LAMP		PHOTOMETRIC DATA				Eff: 69.95 lm/W
MODEL		I _{max} (cd)	162.0	S/MH (C0/180)		1.27
NOMINAL POWER (W)		LOR (%)	100.0	S/MH (C90/270)		1.34
RATED VOLTAGE (V)	120	TOTAL FLUX (lm)	395.42	η UP, DN (C0-180)		0.1, 45.3
NOMINAL FLUX (lm)	395.418	CIE CLASS	DIRECT	η UP, DN (C180-360)		0.1, 54.6
LAMPS INSIDE	1	η up (%)	0.1	CIBSE SHR NOM		1.25
TEST VOLTAGE (V)	120	η down (%)	99.9	CIBSE SHR MAX		1.35



C Range: 0 - 360DEG
 C Interval: 22.5DEG
 Test Speed: HIGH
 Temperature: 25.2 °C
 Operators: Dano
 Test Date: 2023-07-08

γ Range: 0 - 180DEG
 γ Interval: 1.0DEG
 Test System: EVERFINE GO-R5000_V2 SYSTEM V2.00.459
 Humidity: 55.3%
 Test Distance: 2.900m [K=0.8810]
 Remarks:

ZONAL FLUX DIAGRAM

ZONAL FLUX DIAGRAM:

γ	C0	C45	C90	C135	C180	C225	C270	C315	γ	Φ zone	Φ total	%lum, lamp
10	159.9	158.4	157.0	157.6	158.3	159.7	160.8	160.4	0- 10	15.30	15.30	3.87,3.87
20	153.1	150.5	147.5	148.9	150.2	153.3	155.2	154.2	10- 20	44.02	59.32	15,15
30	142.0	137.4	133.4	135.4	137.4	141.9	145.0	143.6	20- 30	67.39	126.7	32,32
40	125.8	119.0	113.5	116.7	120.5	126.7	130.7	128.9	30- 40	82.44	209.1	52.9,52.9
50	101.8	81.72	72.86	85.09	97.20	106.8	110.0	108.4	40- 50	85.49	294.6	74.5,74.5
60	44.47	27.00	24.55	36.30	48.99	69.23	74.09	61.74	50- 60	64.72	359.4	90.9,90.9
70	10.35	6.101	5.239	8.854	15.92	25.21	25.68	17.74	60- 70	28.60	388.0	98.1,98.1
80	0.7398	0.0921	0.1314	0.0937	0.1075	2.954	1.189	2.859	70- 80	6.828	394.8	99.8,99.8
90	0.0094	0.0076	0.0022	0.0021	0.0017	0.0000	0.0013	0	80- 90	0.1973	395.0	99.9,99.9
100	0.0043	0.0094	0.0106	0.0064	0.0171	0.0077	0.0060	0.0119	90-100	0.0044	395.0	99.9,99.9
110	0.0179	0.0256	0.0273	0.0222	0.0341	0.0227	0.0205	0.0272	100-110	0.0177	395.0	99.9,99.9
120	0.0442	0.0542	0.0592	0.0490	0.0461	0.0371	0.0337	0.0409	110-120	0.0339	395.0	99.9,99.9
130	0.0809	0.0944	0.1010	0.0920	0.0776	0.0675	0.0648	0.0745	120-130	0.0554	395.1	99.9,99.9
140	0.1138	0.1237	0.1317	0.1261	0.1352	0.1259	0.1210	0.1316	130-140	0.0799	395.2	99.9,99.9
150	0.1304	0.1362	0.1401	0.1389	0.1914	0.1853	0.1811	0.1891	140-150	0.0906	395.3	100,100
160	0.1568	0.1609	0.1632	0.1636	0.2212	0.2190	0.2152	0.2211	150-160	0.0818	395.3	100,100
170	0.1841	0.1869	0.1871	0.1887	0.2225	0.2224	0.2212	0.2249	160-170	0.0555	395.4	100,100
180	0.2122	0.2163	0.2152	0.2189	0.2131	0.2147	0.2156	0.2177	170-180	0.0202	395.4	100,100
DEG	LUMINOUS INTENSITY:cd									UNIT:lm		

Conical surface Flux(90deg): 252.59 lm

%lum = 63.9%

%lamp = 63.9%

Conical surface Flux(120deg): 359.35 lm

%lum = 90.9%

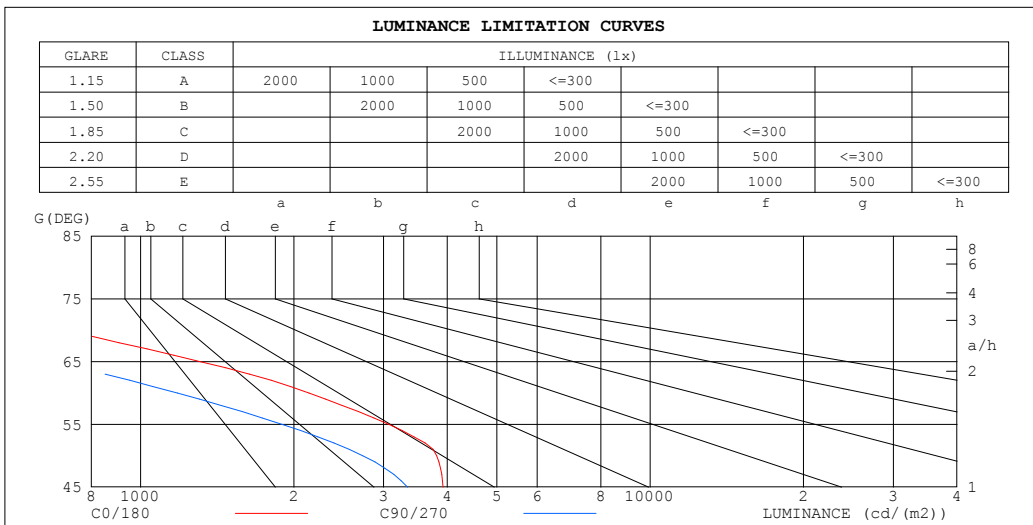
%lamp = 90.9%

C Range: 0 - 360DEG
 C Interval: 22.5DEG
 Test Speed: HIGH
 Temperature:25.2℃
 Operators:Dano
 Test Date:2023-07-08

γ Range: 0 - 180DEG
 γ Interval: 1.0DEG
 Test System:EVERFINE GO-R5000_V2 SYSTEM V2.00.459
 Humidity:55.3%
 Test Distance:2.900m [K=0.8810]
 Remarks:

LUMINANCE LIMITATION CURVES

Test:U:120.1V I:0.0519A P:5.653W PF:0.9072 Freq:60.01Hz Lamp Flux:395.418x1 lm		
NAME: LRS-01-MCT-BR 5000K	TYPE:	WEIGHT:
SPEC.:	DIM.:	SERIAL No.:
MFR.: FOSHAN LEDKEY LIGHTING CO.,LTD.	SUR.:	Shielding Angle:



LUMINANCE cd/(m2)		
G (DEG)	C0/180	C90/270
85	10	20
80	103	18
75	377	81
70	729	369
65	1310	679
60	2141	1182
55	3071	1895
50	3810	2729
45	3925	3339

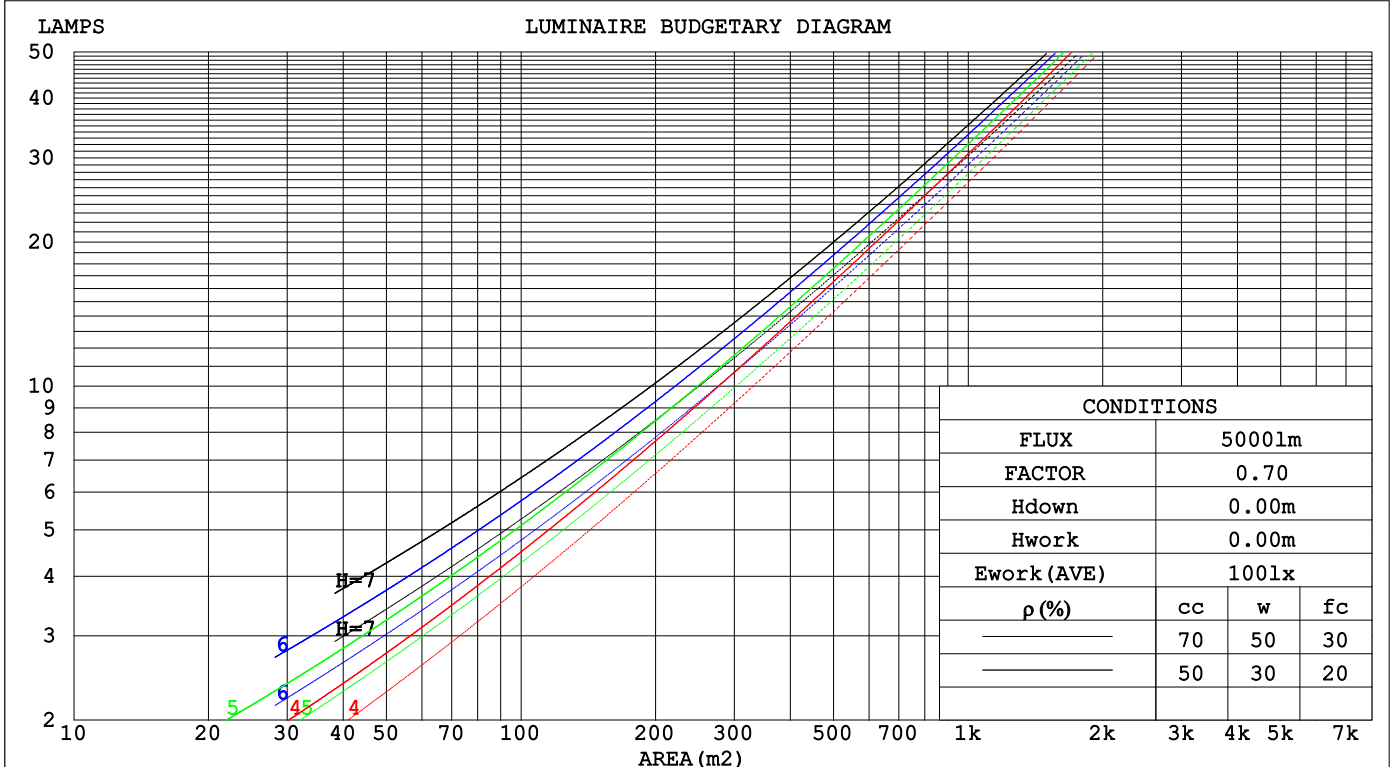
C Range: 0 - 360DEG
 C Interval: 22.5DEG
 Test Speed: HIGH
 Temperature:25.2℃
 Operators:Dano
 Test Date:2023-07-08

γ Range: 0 - 180DEG
 γ Interval: 1.0DEG
 Test System:EVERFINE GO-R5000_V2 SYSTEM V2.00.459
 Humidity:55.3%
 Test Distance:2.900m [K=0.8810]
 Remarks:

CU AND LUMINAIRE BUDGETARY ESTIMATE DIAGRAM

Test:U:120.1V I:0.0519A P:5.653W PF:0.9072 Freq:60.01Hz Lamp Flux:395.418x1 lm		
NAME: LRS-O1-MCT-BR 5000K	TYPE:	WEIGHT:
SPEC.:	DIM.:	SERIAL No.:
MFR.: FOSHAN LEDKEY LIGHTING CO.,LTD.	SUR.:	Shielding Angle:

pcc	30%			70%			50%			30%			10%			0
pw	50%	30%	10%	50%	30%	10%	50%	30%	10%	50%	30%	10%	50%	30%	10%	0
pfc	20%			20%			20%			20%			20%			0
RCR	RCR:Room Cavity Ratio															
	Coefficients of Utilization (CU)															
0.0	1.06	1.06	1.06	1.16	1.16	1.16	1.11	1.11	1.11	1.06	1.06	1.06	1.02	1.02	1.02	.00
1.0	.97	.95	.93	1.05	1.01	.99	1.00	.98	.96	.97	.95	.93	.93	.91	.90	.88
2.0	.87	.83	.80	.93	.88	.83	.90	.85	.81	.87	.83	.80	.84	.81	.78	.76
3.0	.77	.73	.69	.83	.76	.71	.80	.74	.70	.77	.73	.69	.75	.71	.67	.65
4.0	.70	.64	.60	.74	.67	.61	.72	.65	.60	.70	.64	.60	.68	.63	.59	.57
5.0	.63	.57	.52	.67	.59	.53	.65	.58	.53	.63	.57	.52	.61	.56	.52	.50
6.0	.57	.51	.46	.60	.53	.47	.59	.52	.46	.57	.51	.46	.56	.50	.46	.44
7.0	.52	.46	.41	.55	.47	.42	.53	.46	.41	.52	.46	.41	.51	.45	.41	.39
8.0	.48	.41	.37	.50	.43	.37	.49	.42	.37	.48	.41	.37	.47	.41	.37	.35
9.0	.44	.38	.33	.46	.39	.34	.45	.38	.33	.44	.38	.33	.43	.37	.33	.31
10.0	.41	.35	.30	.43	.35	.30	.42	.35	.30	.41	.35	.30	.40	.34	.30	.28



C Range: 0 - 360DEG
 C Interval: 22.5DEG
 Test Speed: HIGH
 Temperature:25.2°C
 Operators:Dano
 Test Date:2023-07-08

γ Range: 0 - 180DEG
 γ Interval: 1.0DEG
 Test System:EVERFINE GO-R5000_V2 SYSTEM V2.00.459
 Humidity:55.3%
 Test Distance:2.900m [K=0.8810]
 Remarks:

WEC AND CCEC

Test:U:120.1V I:0.0519A P:5.653W PF:0.9072 Freq:60.01Hz Lamp Flux:395.418x1 lm		
NAME: LRS-01-MCT-BR 5000K	TYPE:	WEIGHT:
SPEC.:	DIM.:	SERIAL No.:
MFR.: FOSHAN LEDKEY LIGHTING CO.,LTD.	SUR.:	Shielding Angle:

ρcc	30%			70%			50%			30%			10%			0
ρw	50%	30%	10%	50%	30%	10%	50%	30%	10%	50%	30%	10%	50%	30%	10%	0
ρfc	20%			20%			20%			20%			20%			0
RCR	RCR:Room Cavity Ratio						Wall Exitance Coefficients(WEC)									
0.0																
1.0	.219	.126	.041	.244	.139	.044	.231	.133	.042	.219	.126	.041	.208	.121	.039	
2.0	.220	.123	.039	.241	.133	.041	.230	.128	.040	.220	.123	.039	.210	.119	.037	
3.0	.212	.116	.036	.231	.124	.037	.221	.120	.036	.212	.116	.036	.203	.112	.035	
4.0	.202	.108	.033	.219	.114	.034	.210	.111	.033	.202	.108	.033	.194	.105	.032	
5.0	.191	.101	.030	.206	.106	.031	.198	.103	.030	.191	.101	.030	.184	.098	.030	
6.0	.180	.094	.028	.194	.098	.028	.187	.096	.028	.180	.094	.028	.174	.092	.027	
7.0	.171	.087	.025	.183	.091	.026	.176	.089	.026	.171	.087	.025	.165	.086	.025	
8.0	.161	.082	.024	.172	.085	.024	.167	.083	.024	.161	.082	.024	.156	.080	.023	
9.0	.153	.077	.022	.163	.079	.022	.158	.078	.022	.153	.077	.022	.148	.075	.022	
10.0	.145	.072	.020	.154	.074	.021	.150	.073	.021	.145	.072	.020	.141	.071	.020	

ρcc	30%			70%			50%			30%			10%			0
ρw	50%	30%	10%	50%	30%	10%	50%	30%	10%	50%	30%	10%	50%	30%	10%	0
ρfc	20%			20%			20%			20%			20%			0
RCR	RCR:Room Cavity Ratio						Ceiling Cavity Exitance Coefficients(CCEC)									
0.0	.064	.064	.064	.164	.164	.164	.112	.112	.112	.064	.064	.064	.020	.020	.020	
1.0	.060	.054	.048	.152	.135	.120	.104	.093	.083	.060	.054	.048	.019	.017	.016	
2.0	.057	.046	.037	.143	.114	.090	.098	.079	.063	.057	.046	.037	.018	.015	.012	
3.0	.054	.040	.029	.136	.099	.069	.093	.069	.049	.054	.040	.029	.017	.013	.009	
4.0	.052	.036	.023	.130	.088	.055	.089	.061	.039	.052	.036	.023	.017	.012	.008	
5.0	.049	.032	.019	.124	.078	.044	.085	.055	.031	.049	.032	.019	.016	.010	.006	
6.0	.047	.029	.015	.118	.071	.037	.082	.050	.026	.047	.029	.015	.015	.010	.005	
7.0	.045	.027	.013	.113	.065	.031	.078	.046	.022	.045	.027	.013	.015	.009	.004	
8.0	.044	.025	.011	.108	.060	.027	.075	.042	.019	.044	.025	.011	.014	.008	.004	
9.0	.042	.023	.010	.103	.056	.024	.072	.039	.017	.042	.023	.010	.014	.008	.003	
10.0	.040	.022	.009	.099	.052	.021	.069	.037	.015	.040	.022	.009	.013	.007	.003	

C Range: 0 - 360DEG
 C Interval: 22.5DEG
 Test Speed: HIGH
 Temperature:25.2℃
 Operators:Dano
 Test Date:2023-07-08

γ Range: 0 - 180DEG
 γ Interval: 1.0DEG
 Test System:EVERFINE GO-R5000_V2 SYSTEM V2.00.459
 Humidity:55.3%
 Test Distance:2.900m [K=0.8810]
 Remarks:

UGR(Unified Glare Rating) Table

Test:U:120.1V I:0.0519A P:5.653W PF:0.9072 Freq:60.01Hz Lamp Flux:395.418x1 lm		
NAME: LRS-O1-MCT-BR 5000K	TYPE:	WEIGHT:
SPEC.:	DIM.:	SERIAL No.:
MFR.: FOSHAN LEDKEY LIGHTING CO.,LTD.	SUR.:	Shielding Angle:

ceiling/cavity	0.7	0.7	0.5	0.5	0.3	0.7	0.7	0.5	0.5	0.3
walls	0.5	0.3	0.5	0.3	0.3	0.5	0.3	0.5	0.3	0.3
working plane	0.2	0.2	0.2	0.2	0.2	0.2	0.2	0.2	0.2	0.2

Room dimensions	Viewed crosswise					Viewed endwise				
x = 2H y = 2H	15.7	17.1	16.0	17.3	17.5	14.3	15.7	14.6	15.9	16.1
3H	15.8	17.0	16.1	17.3	17.5	14.3	15.5	14.5	15.8	16.0
4H	15.7	16.9	16.0	17.1	17.4	14.2	15.4	14.5	15.6	15.9
6H	15.6	16.7	15.9	17.0	17.3	14.1	15.2	14.4	15.4	15.7
8H	15.6	16.6	15.9	16.9	17.2	14.0	15.1	14.3	15.4	15.7
12H	15.5	16.5	15.8	16.8	17.1	14.0	15.0	14.3	15.3	15.6
4H 2H	15.6	16.8	15.9	17.1	17.3	14.3	15.5	14.6	15.8	16.0
3H	15.7	16.7	16.0	17.0	17.3	14.3	15.3	14.6	15.6	15.9
4H	15.6	16.6	16.0	16.9	17.2	14.2	15.2	14.6	15.5	15.8
6H	15.5	16.4	15.9	16.7	17.1	14.1	14.9	14.5	15.3	15.7
8H	15.5	16.3	15.9	16.6	17.0	14.1	14.8	14.5	15.2	15.6
12H	15.5	16.2	15.9	16.5	16.9	14.0	14.7	14.5	15.1	15.5
8H 4H	15.5	16.3	15.9	16.6	17.0	14.1	14.9	14.5	15.2	15.6
6H	15.4	16.0	15.9	16.5	16.9	14.0	14.6	14.5	15.0	15.5
8H	15.4	15.9	15.8	16.4	16.8	14.0	14.5	14.4	14.9	15.4
12H	15.3	15.8	15.8	16.3	16.7	13.9	14.4	14.4	14.8	15.3
12H 4H	15.5	16.2	15.9	16.5	16.9	14.1	14.7	14.5	15.1	15.5
6H	15.4	15.9	15.8	16.4	16.8	14.0	14.5	14.4	14.9	15.4
8H	15.3	15.8	15.8	16.3	16.7	13.9	14.4	14.4	14.8	15.3

Variations with the observer position at spacings(CIE Pub.117):		
S = 1.0H	+ 0.8 / - 0.9	+ 1.4 / - 2.1
1.5H	+ 0.9 / - 0.9	+ 0.8 / - 1.1
2.0H	+ 2.6 / - 4.8	+ 2.9 / - 4.6

CIE Pub.117, 395.4 lm Total Lamp Luminous Flux Corrected (8log(F/F0) = -3.2)
Area: 0.041547 m2

C Range: 0 - 360DEG
C Interval: 22.5DEG
Test Speed: HIGH
Temperature:25.2℃
Operators:Dano
Test Date:2023-07-08

γ Range: 0 - 180DEG
γ Interval: 1.0DEG
Test System:EVERFINE GO-R5000_V2 SYSTEM V2.00.459
Humidity:55.3%
Test Distance:2.900m [K=0.8810]
Remarks:

UTILIZATION FACTORS TABLE

Test:U:120.1V I:0.0519A P:5.653W PF:0.9072 Freq:60.01Hz Lamp Flux:395.418x1 lm		
NAME: LRS-01-MCT-BR 5000K	TYPE:	WEIGHT:
SPEC.:	DIM.:	SERIAL No.:
MFR.: FOSHAN LEDKEY LIGHTING CO.,LTD.	SUR.:	Shielding Angle:

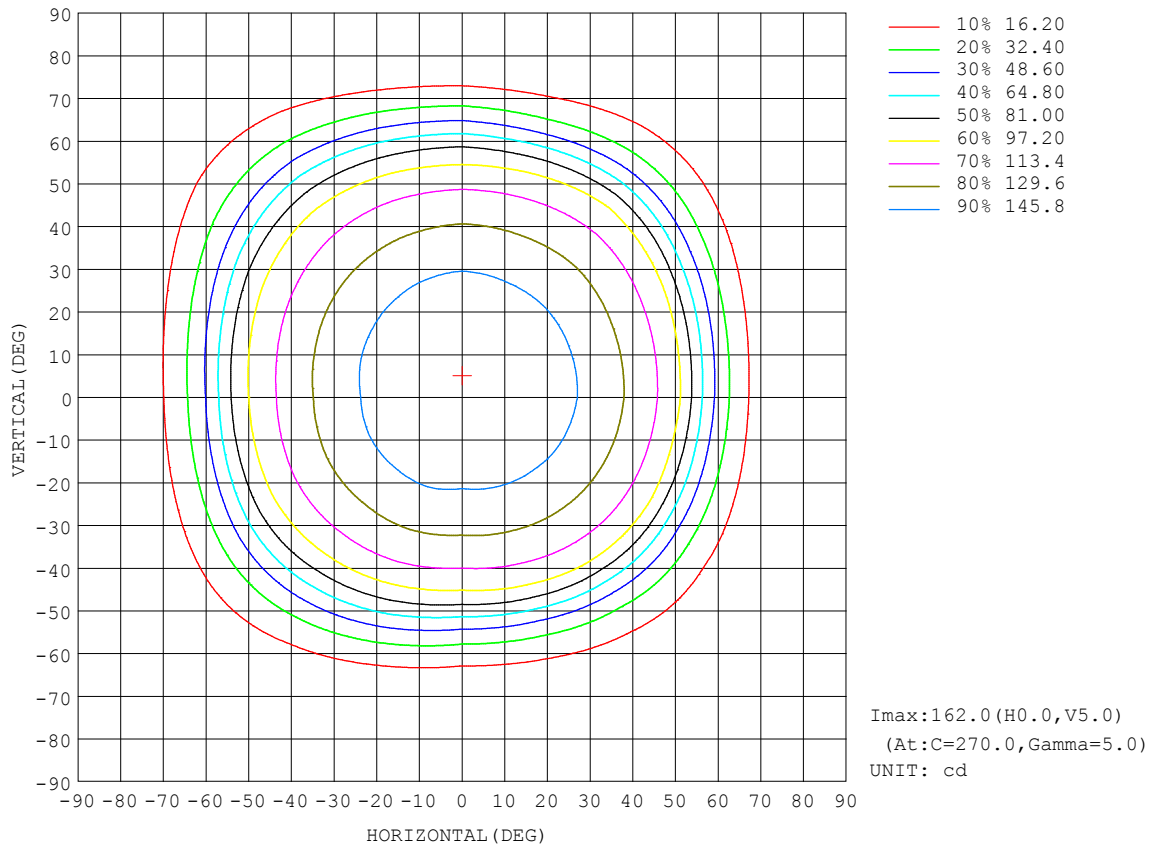
REFLECTANCE										
Ceiling	0.8	0.8	0.8	0.7	0.7	0.7	0.5	0.5	0.5	0
Walls	0.7	0.5	0.3	0.7	0.5	0.3	0.7	0.5	0.3	0
Working plane	0.2	0.2	0.2	0.2	0.2	0.2	0.2	0.2	0.2	0
ROOM INDEX	UTILIZATION FACTORS (PERCENT) k(RI) x RCR = 5									
k = 0.60	61	50	44	61	50	44	60	50	44	38
0.80	72	62	55	71	61	55	70	60	54	48
1.00	81	71	65	80	71	65	78	72	64	58
1.25	88	79	73	87	79	73	85	77	72	65
1.50	93	85	79	92	84	78	89	82	77	71
2.00	99	92	87	98	91	86	95	89	85	78
2.50	103	96	91	101	95	90	97	92	88	81
3.00	106	100	95	104	98	94	100	96	92	84
4.00	109	104	100	107	102	99	102	99	96	88
5.00	111	107	103	108	105	102	104	101	99	90
ROOM INDEX	UF(total)									Direct
According to DIN EN 13032-2 2004			Suspended				SHRNOM = 1.25			

C Range: 0 - 360DEG
 C Interval: 22.5DEG
 Test Speed: HIGH
 Temperature:25.2℃
 Operators:Dano
 Test Date:2023-07-08

γ Range: 0 - 180DEG
 γ Interval: 1.0DEG
 Test System:EVERFINE GO-R5000_V2 SYSTEM V2.00.459
 Humidity:55.3%
 Test Distance:2.900m [K=0.8810]
 Remarks:

ISOCANDELA DIAGRAM

Test:U:120.1V I:0.0519A P:5.653W PF:0.9072 Freq:60.01Hz Lamp Flux:395.418x1 lm		
NAME: LRS-01-MCT-BR 5000K	TYPE:	WEIGHT:
SPEC.:	DIM.:	SERIAL No.:
MFR.: FOSHAN LEDKEY LIGHTING CO.,LTD.	SUR.:	Shielding Angle:



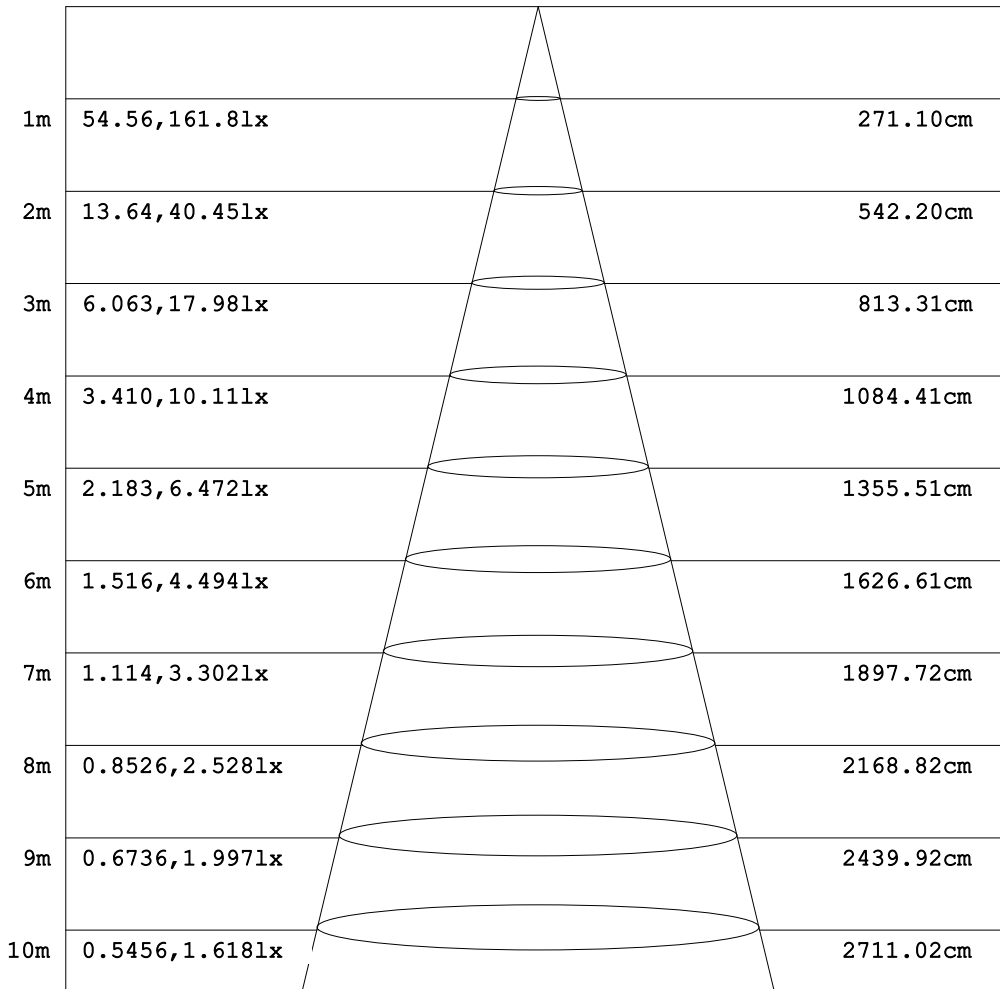
C Range: 0 - 360DEG
 C Interval: 22.5DEG
 Test Speed: HIGH
 Temperature:25.2°C
 Operators:Dano
 Test Date:2023-07-08

γ Range: 0 - 180DEG
 γ Interval: 1.0DEG
 Test System:EVERFINE GO-R5000_V2 SYSTEM V2.00.459
 Humidity:55.3%
 Test Distance:2.900m [K=0.8810]
 Remarks:

AAI Figure

Test:U:120.1V I:0.0519A P:5.653W PF:0.9072 Freq:60.01Hz Lamp Flux:395.418x1 lm		
NAME: LRS-01-MCT-BR 5000K	TYPE:	WEIGHT:
SPEC.:	DIM.:	SERIAL No.:
MFR.: FOSHAN LEDKEY LIGHTING CO.,LTD.	SUR.:	Shielding Angle:

Flux out:324.7 lm



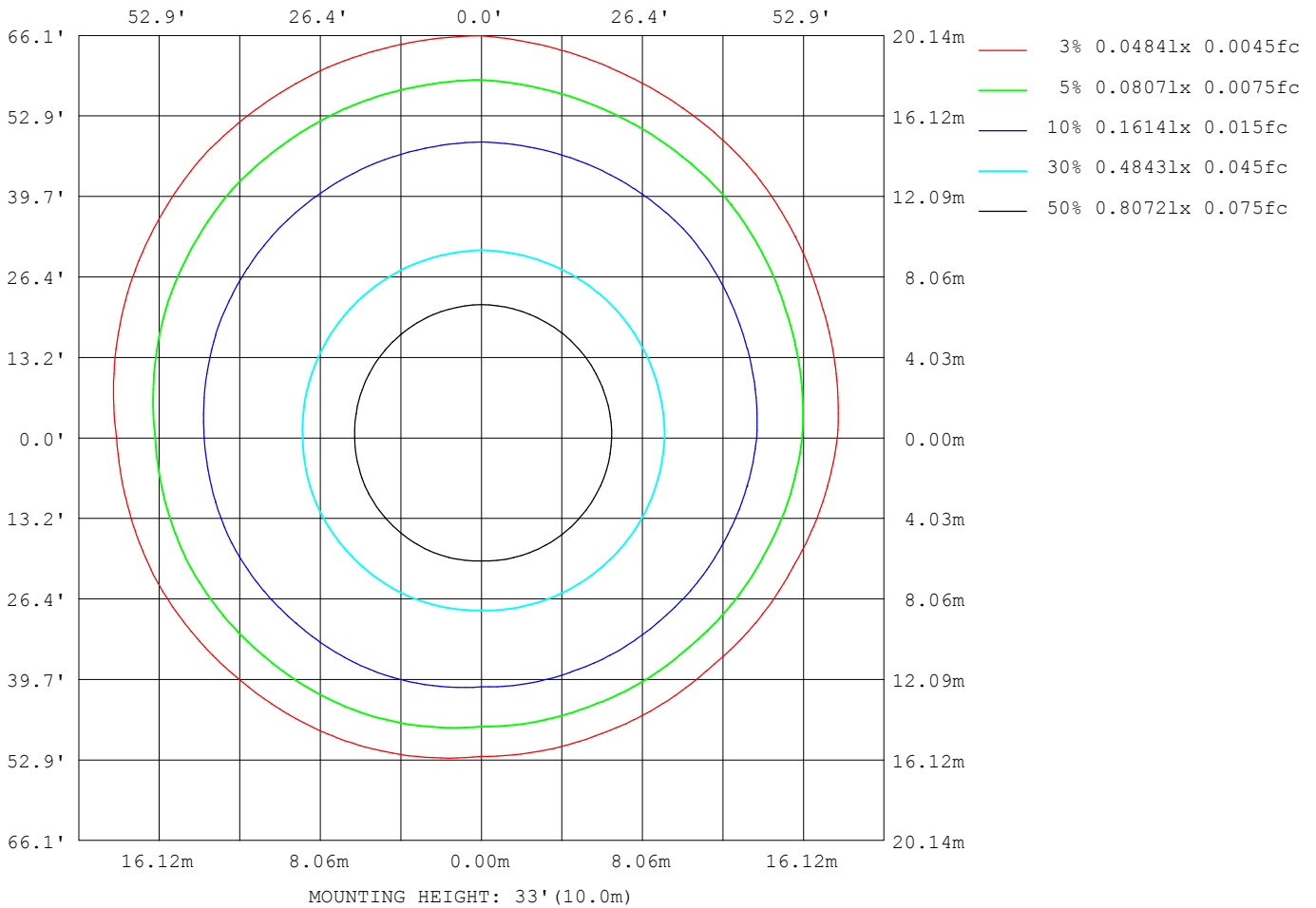
Note:The Curves indicate the illuminated area and the average illumination when the luminaire is at different distance.

C Range: 0 - 360DEG
 C Interval: 22.5DEG
 Test Speed: HIGH
 Temperature:25.2°C
 Operators:Dano
 Test Date:2023-07-08

γ Range: 0 - 180DEG
 γ Interval: 1.0DEG
 Test System:EVERFINE GO-R5000_V2 SYSTEM V2.00.459
 Humidity:55.3%
 Test Distance:2.900m [K=0.8810]
 Remarks:

ISOLUX DIAGRAM

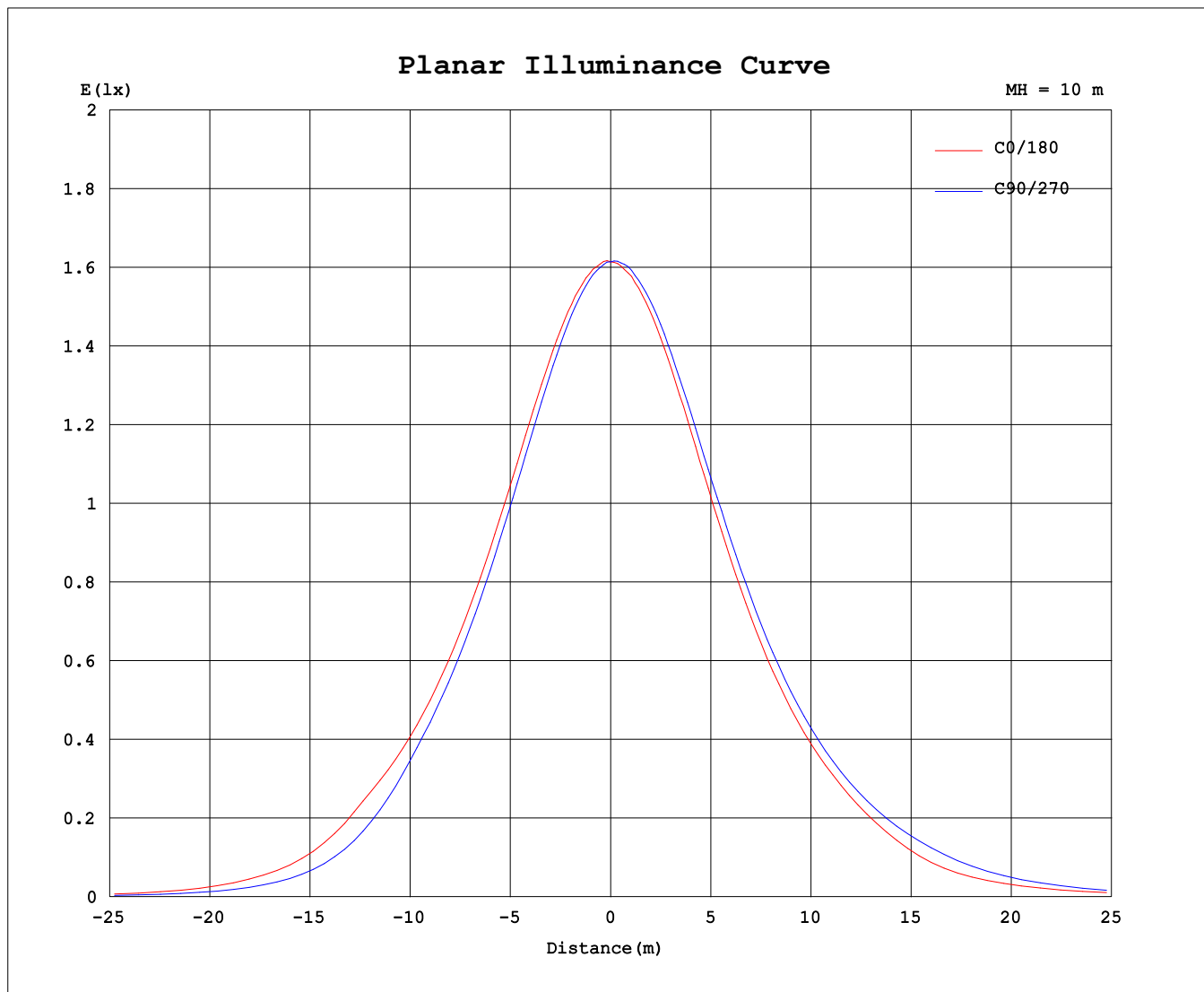
Test:U:120.1V I:0.0519A P:5.653W PF:0.9072 Freq:60.01Hz Lamp Flux:395.418x1 lm		
NAME: LRS-01-MCT-BR 5000K	TYPE:	WEIGHT:
SPEC.:	DIM.:	SERIAL No.:
MFR.: FOSHAN LEDKEY LIGHTING CO.,LTD.	SUR.:	Shielding Angle:



C Range: 0 - 360DEG
 C Interval: 22.5DEG
 Test Speed: HIGH
 Temperature:25.2°C
 Operators:Dano
 Test Date:2023-07-08

γ Range: 0 - 180DEG
 γ Interval: 1.0DEG
 Test System:EVERFINE GO-R5000_V2 SYSTEM V2.00.459
 Humidity:55.3%
 Test Distance:2.900m [K=0.8810]
 Remarks:

Planar Illuminance Curve



C Range: 0 - 360DEG
C Interval: 22.5DEG
Test Speed: HIGH
Temperature: 25.2°C
Operators: Dano
Test Date: 2023-07-08

γ Range: 0 - 180DEG
γ Interval: 1.0DEG
Test System: EVERFINE GO-R5000_V2 SYSTEM V2.00.459
Humidity: 55.3%
Test Distance: 2.900m [K=0.8810]
Remarks:

LUMINOUS DISTRIBUTION INTENSITY DATA

Test:U:120.1V I:0.0519A P:5.653W PF:0.9072 Freq:60.01Hz Lamp Flux:395.418x1 lm		
NAME: LRS-O1-MCT-BR 5000K	TYPE:	WEIGHT:
SPEC.:	DIM.:	SERIAL No.:
MFR.: FOSHAN LEDKEY LIGHTING CO.,LTD.	SUR.:	Shielding Angle:

Table--1

UNIT: cd

C (DEG) γ (DEG)	0	22.5	45	67.5	90	112.5	135	157.5	180	202.5	225	247.5	270	292.5	315	337.5			
0	161	161	161	161	161	161	161	161	161	161	161	161	161	161	161	161			
5	161	161	161	160	160	160	160	160	160	161	161	161	162	162	162	161			
10	160	159	158	158	157	158	158	158	158	159	160	161	161	161	160	160			
15	157	156	155	154	153	154	154	154	155	156	157	158	159	158	158	157			
20	153	152	150	149	148	149	149	150	150	152	153	155	155	155	154	153			
25	148	146	145	143	141	142	143	144	144	146	148	150	151	150	149	148			
30	142	140	137	135	133	135	135	137	137	140	142	144	145	144	144	142			
35	135	132	129	127	125	126	127	128	129	132	135	137	138	137	137	135			
40	126	122	119	116	114	115	117	119	120	123	127	129	131	129	129	127			
45	115	111	106	102	98.1	102	105	108	110	114	117	120	121	120	119	117			
50	102	92.0	81.7	75.6	72.9	79.8	85.1	92.9	97.2	103	107	109	110	109	108	105			
55	73.2	60.1	50.6	45.9	45.2	53.4	60.3	69.5	76.4	85.7	91.5	94.7	95.4	94.0	91.5	81.0			
60	44.5	33.6	27.0	24.9	24.6	30.5	36.3	43.8	49.0	60.4	69.2	72.6	74.1	67.8	61.7	51.0			
65	23.0	16.2	13.4	12.2	11.9	15.1	18.8	24.8	30.1	38.1	44.4	47.0	47.5	40.0	34.8	28.1			
70	10.4	7.24	6.10	5.65	5.24	6.72	8.85	12.3	15.9	22.5	25.2	26.1	25.7	20.5	17.7	13.8			
75	4.06	2.31	1.78	1.25	0.87	1.51	2.34	3.62	6.28	11.3	12.0	11.0	11.3	8.84	8.64	6.27			
80	0.74	0.10	0.09	0.11	0.13	0.12	0.09	0.07	0.11	3.71	2.95	1.66	1.19	1.38	2.86	2.14			
85	0.04	0.04	0.05	0.06	0.07	0.07	0.05	0.03	0.01	0.03	0.04	0.06	0.07	0.07	0.07	0.06			
90	0.01	0.01	0.01	0.00	0.00	0.00	0.00	0.00	0.00	0.00	0.00	0.00	0.00	0.00	0.00	0.01			
95	0.00	0.00	0.00	0.00	0.00	0.00	0.00	0.00	0.01	0.00	0.00	0.00	0.00	0.00	0.01	0.01			
100	0.00	0.01	0.01	0.01	0.01	0.01	0.01	0.01	0.02	0.01	0.01	0.01	0.01	0.01	0.01	0.02			
105	0.01	0.01	0.02	0.02	0.02	0.01	0.01	0.01	0.03	0.02	0.02	0.01	0.01	0.02	0.02	0.03			
110	0.02	0.02	0.03	0.03	0.03	0.02	0.02	0.02	0.03	0.03	0.02	0.02	0.02	0.02	0.03	0.03			
115	0.03	0.03	0.04	0.04	0.04	0.04	0.03	0.03	0.04	0.03	0.03	0.03	0.03	0.03	0.03	0.04			
120	0.04	0.05	0.05	0.06	0.06	0.05	0.05	0.05	0.05	0.04	0.04	0.03	0.03	0.04	0.04	0.05			
125	0.06	0.07	0.07	0.08	0.08	0.07	0.07	0.06	0.06	0.05	0.05	0.05	0.05	0.05	0.05	0.06			
130	0.08	0.09	0.09	0.10	0.10	0.09	0.09	0.08	0.08	0.07	0.07	0.07	0.06	0.07	0.07	0.08			
135	0.10	0.11	0.11	0.12	0.12	0.12	0.11	0.10	0.10	0.10	0.10	0.09	0.09	0.10	0.10	0.11			
140	0.11	0.12	0.12	0.13	0.13	0.13	0.13	0.12	0.14	0.13	0.13	0.12	0.12	0.13	0.13	0.13			
145	0.12	0.13	0.13	0.13	0.14	0.13	0.13	0.13	0.17	0.16	0.16	0.15	0.15	0.16	0.16	0.17			
150	0.13	0.13	0.14	0.14	0.14	0.14	0.14	0.14	0.19	0.19	0.19	0.18	0.18	0.19	0.19	0.19			
155	0.14	0.15	0.15	0.15	0.15	0.15	0.15	0.15	0.21	0.21	0.21	0.20	0.20	0.21	0.21	0.21			
160	0.16	0.16	0.16	0.16	0.16	0.16	0.16	0.16	0.22	0.22	0.22	0.22	0.22	0.22	0.22	0.22			
165	0.17	0.17	0.17	0.17	0.17	0.17	0.17	0.17	0.22	0.22	0.22	0.22	0.22	0.22	0.22	0.23			
170	0.18	0.19	0.19	0.19	0.19	0.19	0.19	0.19	0.22	0.22	0.22	0.22	0.22	0.22	0.22	0.23			
175	0.20	0.21	0.21	0.21	0.21	0.21	0.21	0.21	0.22	0.22	0.22	0.22	0.22	0.22	0.23	0.23			
180	0.21	0.22	0.22	0.22	0.22	0.22	0.22	0.22	0.21	0.21	0.21	0.21	0.22	0.22	0.22	0.22			

C Range: 0 - 360DEG
 C Interval: 22.5DEG
 Test Speed: HIGH
 Temperature:25.2℃
 Operators:Dano
 Test Date:2023-07-08

γ Range: 0 - 180DEG
 γ Interval: 1.0DEG
 Test System:EVERFINE GO-R5000_V2 SYSTEM V2.00.459
 Humidity:55.3%
 Test Distance:2.900m [K=0.8810]
 Remarks: